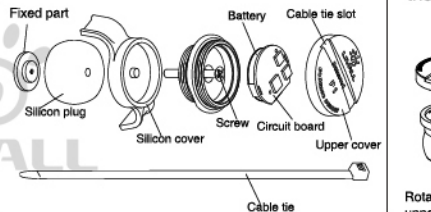


Thanks for using Livall P1 Nano Cadence, to insure a safe and satisfactory operation, please read this product instruction carefully. Please properly keep this instruction for further reference. Based on the technology of gravity, this product used the latest Livall cadence frequency algorithm to design this nano cadence with the smallest volume, it is easy and flexible to install and applicable to most bicycles in the market. It also can easily have a good knowledge of riding for the user by the data of cadence.



1. Installation of $\Phi 22-24$ mm round hole in the middle of the chain wheel



Rotate out the upper cover



Use toothpick to raise the circuit board



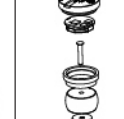
Put the silicon plug into the hole of the chain wheel and adjust the tightness by the screw



Put the circuit board without battery in the shell of P1



Screw the upper cover into the lower shell of the product



Installation completed

2. Installation order



Remove the upper shell, circuit board and the bottom shell



Install those onto the silicon cover in order

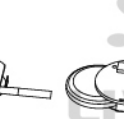


Use the cable tie to tie the product to the inner side of the right crank and pull tight

3.M22 Thread Crankset

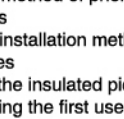


3.1 Take the plastic mat out from the crankshaft by tweezers.

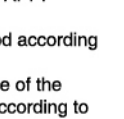


3.2 Unscrewed the cap of the sensor then screw the cadence sensor clockwise into the threaded hole tightly by adjustable wrench in case of dropping while riding. Then cover with the cap. threaded hole tightly in case of dropping while riding.

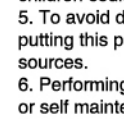
4. Change of battery



Remove the circuit board



Use toothpick to remove the battery



Put CR2032 battery back into the circuit board

5. Phone connection: Please download and install Livall APP from Livall website www.livall.com. Please refer to the add equipment method of phone APP.

Precautions

1. Choose installation method according to your bikes
2. Pull out the insulated piece of the battery during the first use according to the drawing instruction.
3. This nano cadence is used to calculate the frequency of pedaling during riding, and through Livall APP, indicate cadence frequency and the remaining power.

Product specifications

Battery type: CR2032 3V 210mAH

Installation location: in the middle hole of the chain wheel, inner side of the right crank

Standby duration: Max 180d

Product size: 30*30*15mm

After-Sales Service Warranty Card

After-Sales Information:

Thank you for purchasing LIVALL product, please read the following instructions for better service

1. The warranty time is 1 year after purchase. Any quality problem can be maintained free or it can be replaced within 3 months after purchase if re-sale is available.
2. Damages caused by the following reasons are not included in the scope of free warranty: Exceeding the specified warranty period; Damages caused by unsuitable operation; Damages caused by user removing or repairing it by themselves as well as other man-made damages.
3. This warranty card is the important certificate for the warranty service provided to the end user,

please keep it well. The card should be taken along with the product to the manufacturer when the maintenance is required.

4. Our company reserves the rights to modification and explanation for above terms and conditions. Please visit www.livall.com for more information.

User Name: _____ Tel.: _____
 ID No.: _____
 Home Address: _____
 Seller: _____
 Purchase Date: _____
 Maintenance Record: _____

Note: This form should be completed in real details, otherwise, it would be invalid.